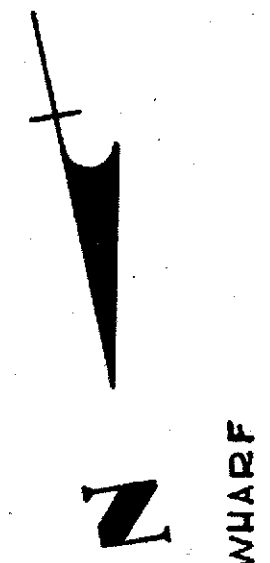
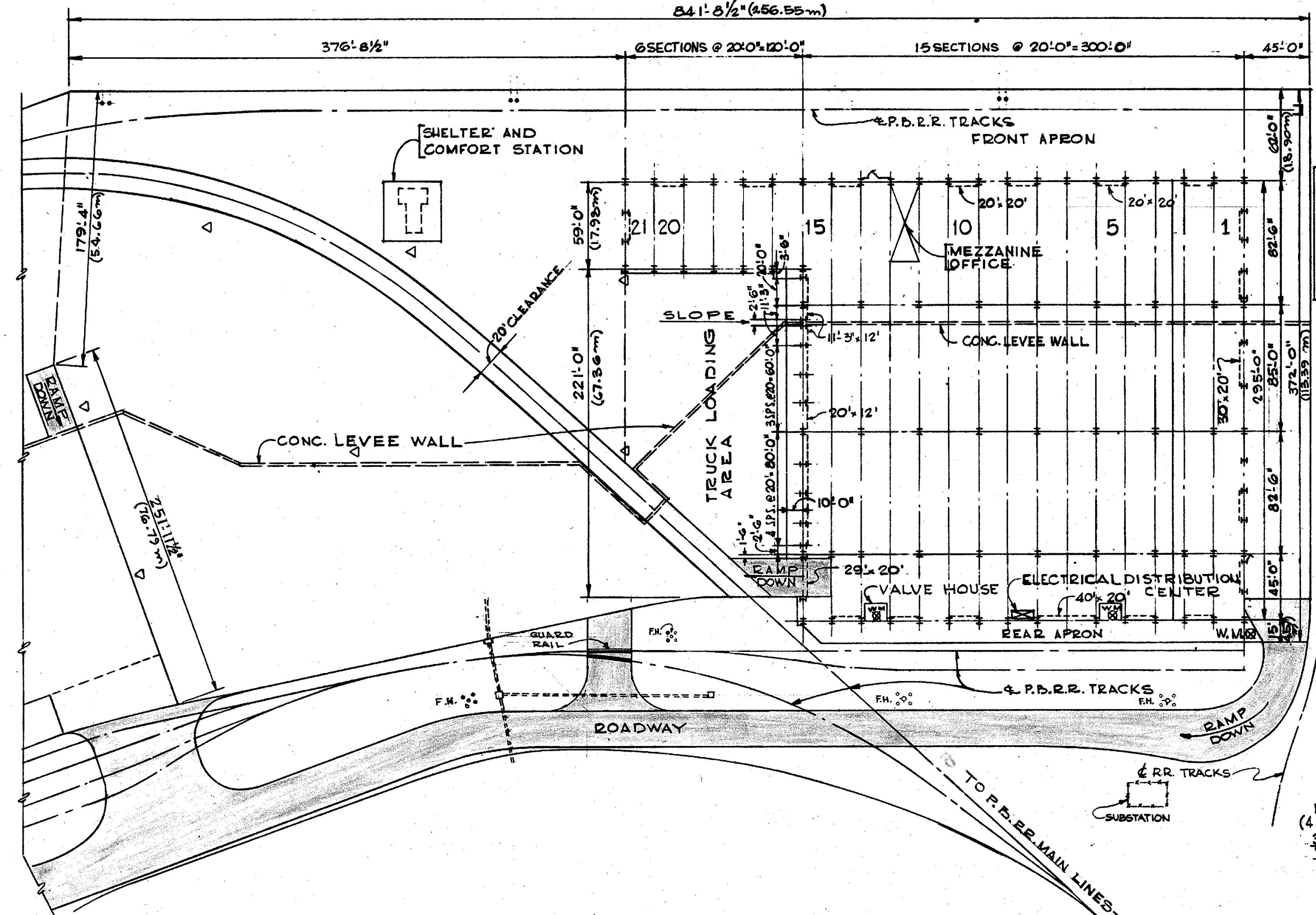


MISSISSIPPI RIVER

841'-8 1/2" (256.55m)



NASHVILLE AVE. WHARF

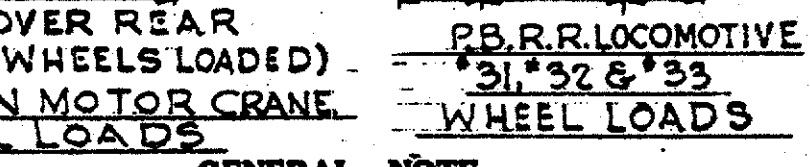
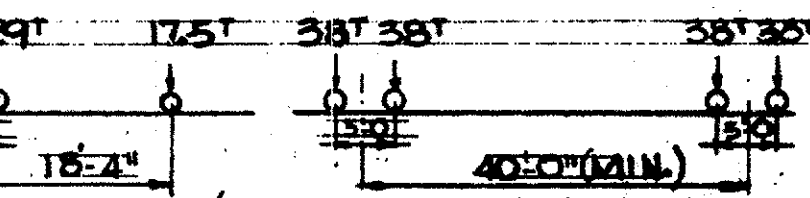
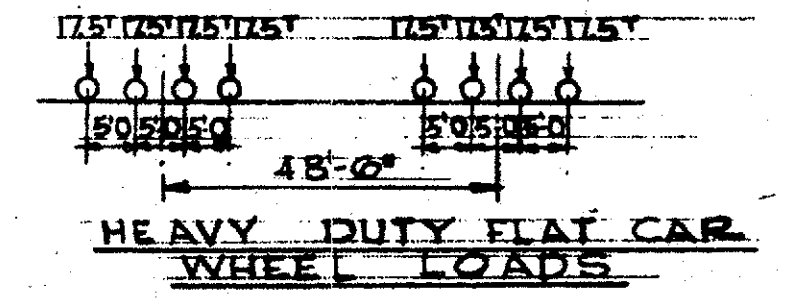


**ALLOWABLE LIVE LOADS**

**FRONT APRON** 850#/SQ. FT. UNIFORM LIVE LOAD, 16 TONS SINGLE AXLE LOAD, OR 8 TONS TANDEM, 4' APART 35 TON MOTOR CRANE, P.B. R.R. LOCOMOTIVES #31, #32, + #33, HEAVY-DUTY FLATCAR AND GANTRY CRANE IN ANY COMBINATIONS.

**FRONT APRON TO LEVEE WALL** 850#/SQ. FT. UNIFORM LIVE LOAD, 16 TONS SINGLE AXLE LOAD OR 8 TONS TANDEM 4' APART AND 35 TON MOTOR CRANE IN ANY COMBINATIONS

**LANDWARD OF LEVEE WALL** 1000#/SQ. FT. UNIFORM LIVE LOAD, OR 16 TONS SINGLE AXLE LOAD OR 8 TONS TANDEM 4' APART.



**GENERAL NOTE**

DIMENSIONS OF WHARF TAKEN FROM C TO C OF COLS. OR C OF FIREWALL, FRONT EDGE OF WHARF TO EDGE OF REAR APRON AND/OR TOP OF RAMPS.

**LEGEND**

- APPROACHES, RAMPS AND ROADWAYS THAT ARE NOT INCLUDED IN TABULATED AREAS.
- I-I- 20' x 14' STEEL ROLLING DOOR - UNLESS OTHERWISE NOTED.
- WATCHMAN'S DOOR.
- SHIP SERVICE.
- W.M. - WATER METER.
- ELECTRICAL DISTRIBUTION CENTER AND METER - ALL LIGHTS AND SERVICE OUTLETS - SECTIONS 1 THRU 21.
- ▷ FLOODLIGHT POLE

**TABLE OF WHARF & SHED AREAS**

	Sq. M.	Sq. Ft.	REVISIONS		
FRONT APRON	2,419.16	26,040	BY	DATE	DESCRIPTION
SHED	8,827.35	95,020	A.C.C.	12.1.97	GENERAL
REAR APRON	409.68	4,410			
OPEN AREA (INCL. T.L.A.)	15,872.70	170,858			
GROSS AREA	27,528.89	296,328			
AREA OCCUPIED BY BOARD AND U.S. CUSTOMS.					
NET AREA					
TENANT PREMIUM AREA					

**BOARD OF COMMISSIONERS  
PORT OF NEW ORLEANS, LOUISIANA**

**HENRY CLAY AVE. WHARF  
GENERAL ASSIGNMENT DRAWING**

DATE 5-1-76  
DRAWN BY A.R.

RECOMMENDED  
A.C.C. Chief Drafting Section

APPROVED  
R. H. Morgan Chief Design Division

M 13-10620