

HENRY CLAY AVE. & PART NASHVILLE AVE. WHARF - WATER  
SCALE 1"=50'-0"

REV. 7	BY	DATE	REV. 6	BY	DATE	REV. 5	BY	DATE	REV. 4	BY	DATE	REV. 3	BY	DATE	REV. 2	BY	DATE	REV. 1	BY	DATE
--------	----	------	--------	----	------	--------	----	------	--------	----	------	--------	----	------	--------	----	------	--------	----	------

**MOSES ENGINEERS**  
CONSULTING ENGINEERS  
909 Poydras Street, Suite 2150  
New Orleans, Louisiana 70112-1034

STATE OF LOUISIANA  
ISAAC J. SCHANTZ  
REG. No. 25683  
PROFESSIONAL ENGINEER

DESIGNED: DFL  
CHECKED: IJS  
APPROVED: IJS

IDENTIFICATION NO.  
46313.87

**BOARD OF COMMISSIONERS  
PORT OF NEW ORLEANS**

HENRY CLAY AVE. & PART NASHVILLE AVE. WHARF  
WATER/SEWER STUDY  
HENRY CLAY ST. & PART NASHVILLE AVE. WHARF - WATER

SCALE: AS NOTED  
DATE: 12/4/03

DESIGNED: \_\_\_\_\_  
CHECKED: \_\_\_\_\_  
APPROVED: \_\_\_\_\_

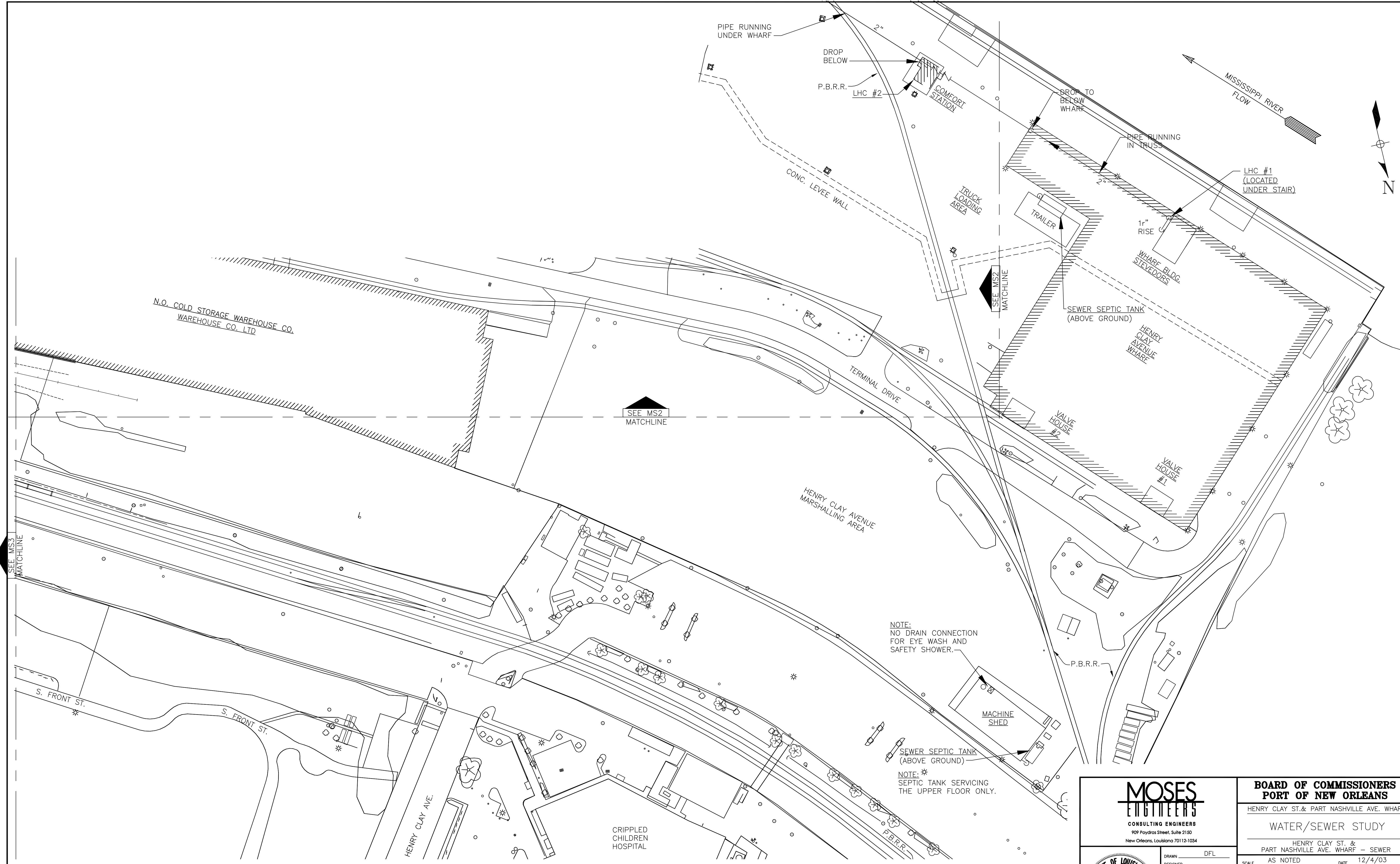
DESIGNER: \_\_\_\_\_  
DRAWN: \_\_\_\_\_  
SUBMITTED BY: \_\_\_\_\_  
PROJECT ENGINEER: \_\_\_\_\_

RECOMMENDED: \_\_\_\_\_  
APPROVED: \_\_\_\_\_

WILLIAM B. CROMARTIE  
ENGINEERING MANAGER

KYLE C. JONES  
CAPITAL IMPROVEMENT PROGRAM MANAGER

DWG. NO. C3-11986-MW1 REG. 020236



HENRY CLAY AVE. & PART NASHVILLE AVE. WHARF - SEWER  
SCALE 1"=50'-0"

NOTE:  
NO DRAIN CONNECTION  
FOR EYE WASH AND  
SAFETY SHOWER.

NOTE:  
\*  
SEPTIC TANK SERVICING  
THE UPPER FLOOR ONLY.

**MOSES ENGINEERS**  
CONSULTING ENGINEERS  
909 Poydras Street, Suite 2150  
New Orleans, Louisiana 70112-1034

DESIGNED: DFL  
CHECKED: IJS  
APPROVED: IJS

IDENTIFICATION NO.  
46313.87

STATE OF LOUISIANA  
ISAAC J. SCHANTZ  
REG. No. 25693  
REGISTERED PROFESSIONAL ENGINEER  
IN MECHANICAL ENGINEERING

**BOARD OF COMMISSIONERS  
PORT OF NEW ORLEANS**

HENRY CLAY ST. & PART NASHVILLE AVE. WHARF  
WATER/SEWER STUDY

HENRY CLAY ST. &  
PART NASHVILLE AVE. WHARF - SEWER

SCALE: AS NOTED  
DATE: 12/4/03

DESIGNED: \_\_\_\_\_ DATE: \_\_\_\_\_  
DRAWN: \_\_\_\_\_  
CHECKED: \_\_\_\_\_ SUBMITTED: \_\_\_\_\_  
BY: \_\_\_\_\_ PROJECT ENGINEER

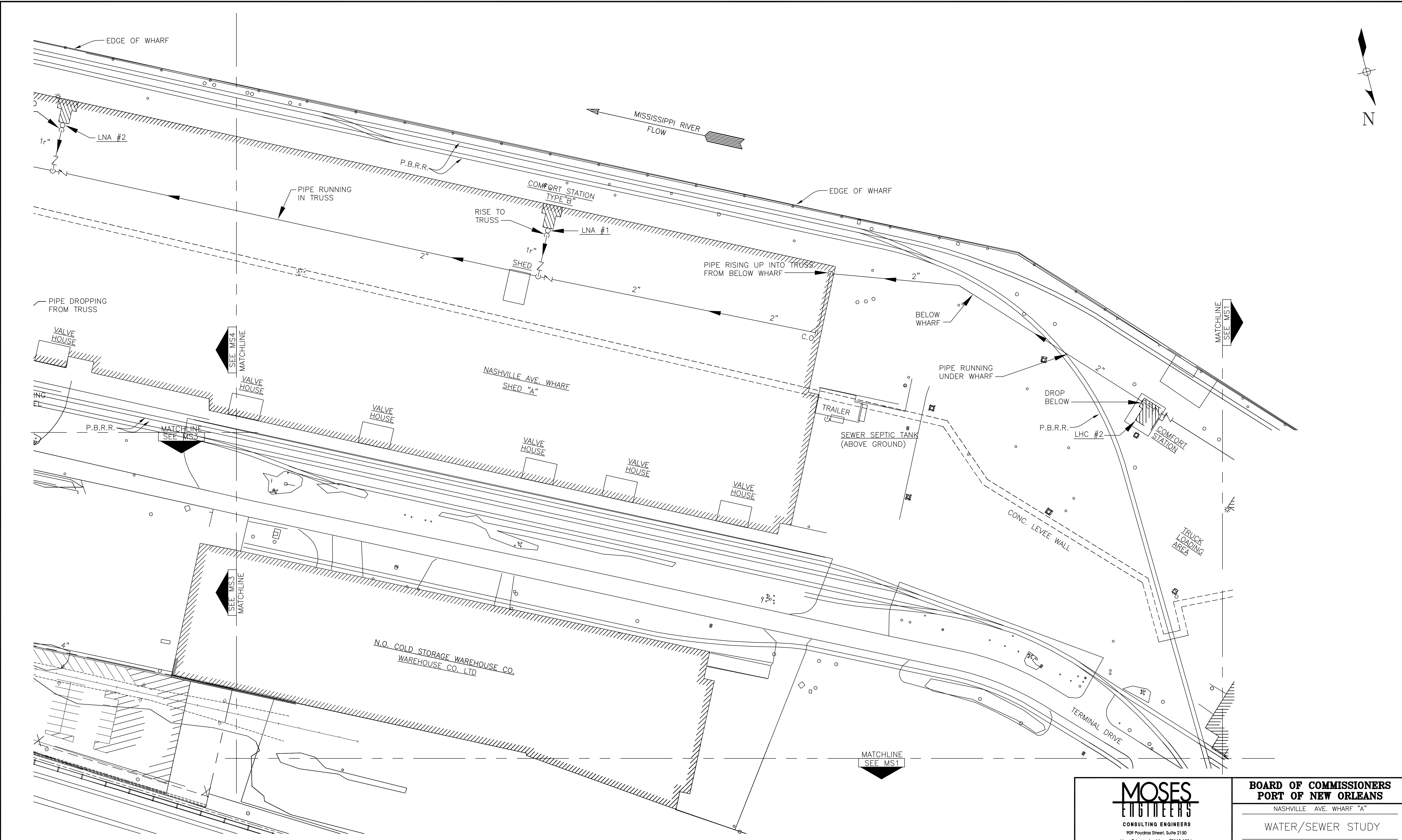
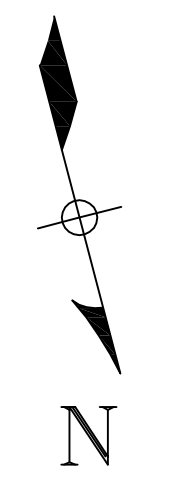
RECOMMENDED: \_\_\_\_\_ APPROVED: \_\_\_\_\_

WILLIAM B. CROMARTIE  
ENGINEERING MANAGER

KYLE C. JONES  
CAPITAL IMPROVEMENT PROGRAM MANAGER

DWG. NO. C3-11986-MS1 REQ. 020236

REV. 7	BY	DATE	REV. 6	BY	DATE	REV. 5	BY	DATE	REV. 4	BY	DATE	REV. 3	BY	DATE	REV. 2	BY	DATE	REV. 1	BY	DATE
--------	----	------	--------	----	------	--------	----	------	--------	----	------	--------	----	------	--------	----	------	--------	----	------



**PART NASHVILLE AVE. WHARF "A" - SEWER**  
SCALE: 1"=50'-0"

REV. 7	BY	DATE	REV. 6	BY	DATE	REV. 5	BY	DATE	REV. 4	BY	DATE	REV. 3	BY	DATE	REV. 2	BY	DATE	REV. 1	BY	DATE
--------	----	------	--------	----	------	--------	----	------	--------	----	------	--------	----	------	--------	----	------	--------	----	------

**MOSES ENGINEERS**  
CONSULTING ENGINEERS  
909 Poydras Street, Suite 2150  
New Orleans, Louisiana 70112-1034

STATE OF LOUISIANA  
ISAAC J. SCHANTZ  
REG. No. 25993  
PROFESSIONAL ENGINEER  
MECHANICAL ENGINEER

DRAWN: DFL  
DESIGNED: IJS  
CHECKED: IJS  
APPROVED: IJS

IDENTIFICATION NO.  
46313.87

**BOARD OF COMMISSIONERS  
PORT OF NEW ORLEANS**

NASHVILLE AVE. WHARF "A"

**WATER/SEWER STUDY**

PART NASHVILLE AVE. WHARF "A" - SEWER

SCALE: AS NOTED  
DATE: 12/4/03

DESIGNED: \_\_\_\_\_  
DRAWN: \_\_\_\_\_  
CHECKED: \_\_\_\_\_  
SUBMITTED BY: \_\_\_\_\_  
PROJECT ENGINEER

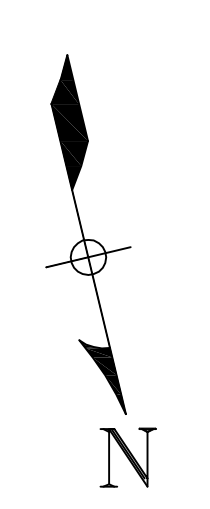
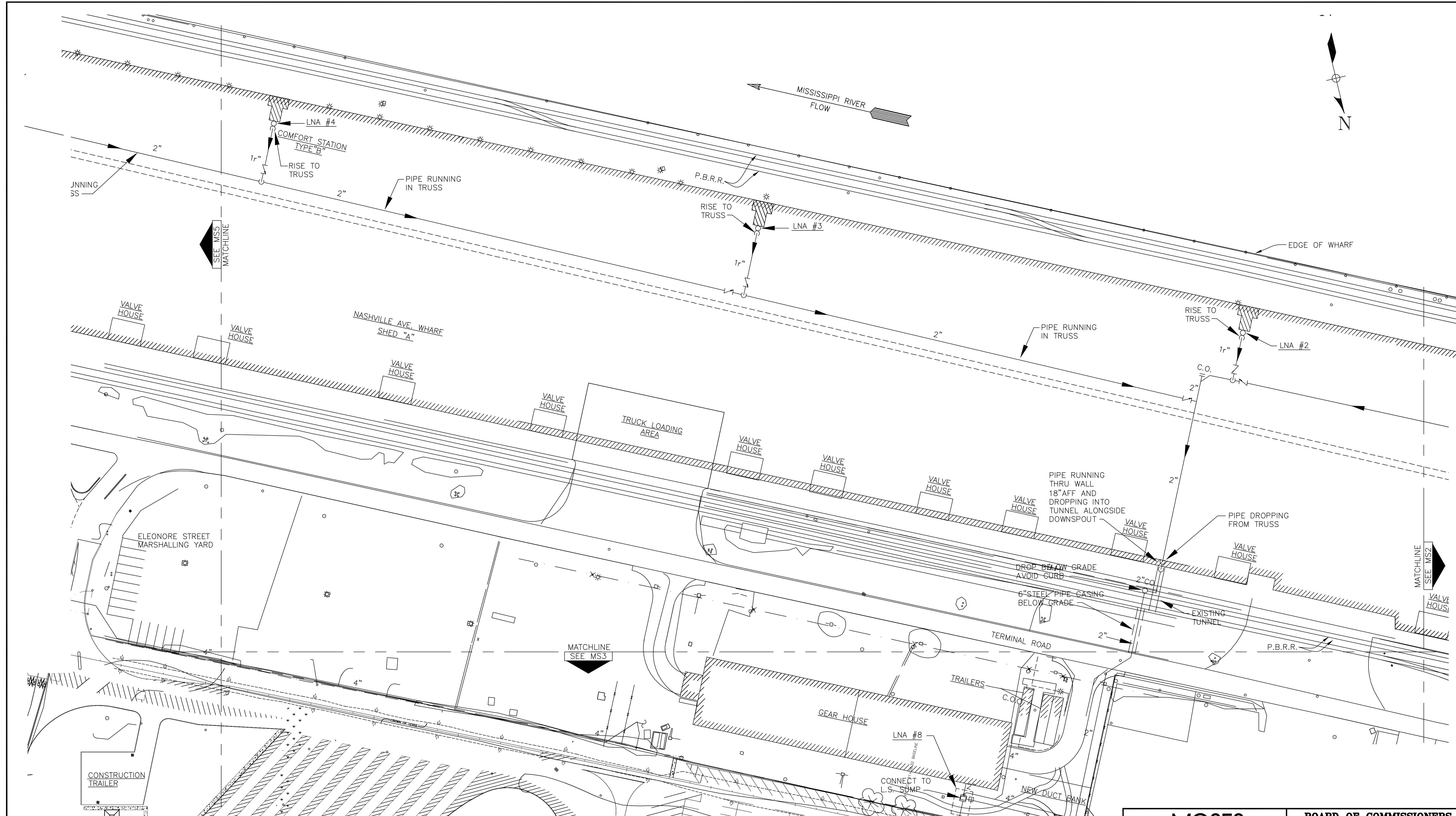
RECOMMENDED: \_\_\_\_\_  
APPROVED: \_\_\_\_\_  
PROJECT ENGINEER

WILLIAM B. CROWMARTIE  
ENGINEERING MANAGER

KYLE C. JONES  
CAPITAL IMPROVEMENT PROGRAM MANAGER

DWG. NO. C3-11986-MS2  
REQ. 020236





**PART NASHVILLE ST. WHARF "A" - SEWER**  
SCALE: 1"=50'-0"

REV. 7	BY	DATE	REV. 6	BY	DATE	REV. 5	BY	DATE	REV. 4	BY	DATE	REV. 3	BY	DATE	REV. 2	BY	DATE	REV. 1	BY	DATE
--------	----	------	--------	----	------	--------	----	------	--------	----	------	--------	----	------	--------	----	------	--------	----	------

 <b>MOSES ENGINEERS</b> CONSULTING ENGINEERS 909 Poydras Street, Suite 2150 New Orleans, Louisiana 70112-1034	<b>BOARD OF COMMISSIONERS</b> <b>PORT OF NEW ORLEANS</b> NASHVILLE AVE. WHARF "A" <b>WATER/SEWER STUDY</b> PART NASHVILLE AVE. WHARF "A" - SEWER	
	SCALE: AS NOTED DATE: 12/4/03	DRAWN: DFL DESIGNED: IJS CHECKED: IJS APPROVED: IJS IDENTIFICATION NO. 46313.87
 <b>ISAAC J. SCHANTZ</b> REG. NO. 25663 PROFESSIONAL ENGINEER	WILLIAM B. GROMARTIE ENGINEERING MANAGER CAPITAL IMPROVEMENT PROGRAM MANAGER	KYLE C. JONES PROJECT ENGINEER APPROVED
DWG. NO. C3-11986-MS4		REQ. 020236