

BOARD OF COMMISSIONERS OF THE PORT OF NEW ORLEANS

DRAFTING & SPECIFICATIONS STANDARD REQUIREMENT

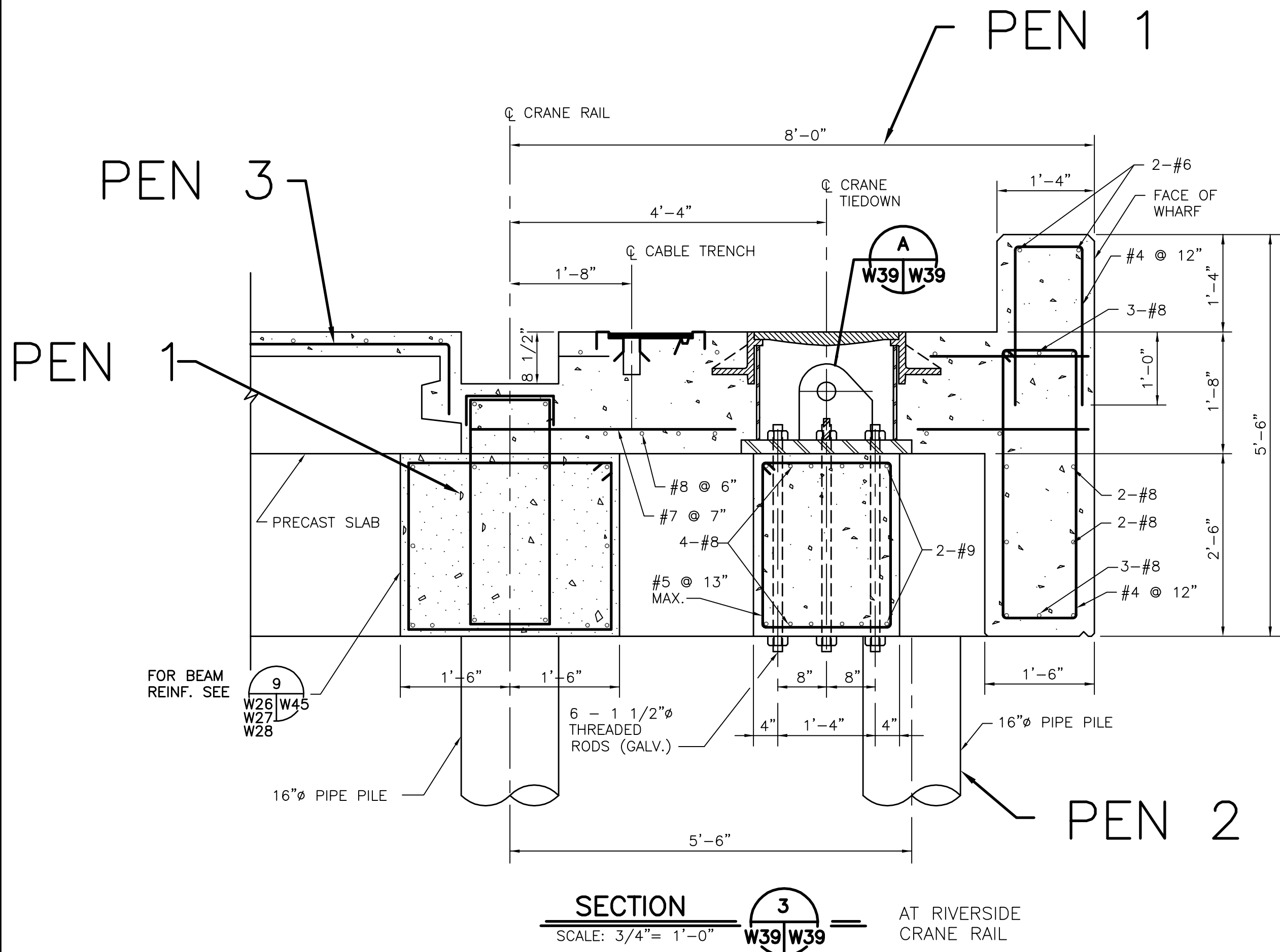
- All drawings to be done in AutoCad 2009 or later version
- 24"x 36" drawing size preferable, on vellum material
- Colors 7, 8, 9, 10 to pen no.1 (pen width .009 inch/.225 mm)
 - Colors 1, 2, 3, 11, 12 to pen no.2 (pen width .014 inch/.350 mm)
 - Colors 4, 5, 6, 13, 15 to pen no.3 (pen width .028 inch/.700 mm)
- Use pen no.2 for all of the object lines thickness, if the drawing involves existing and new conditions together, use as follows:
 - Pen no.2 for all existing conditions
 - Pen no.3 for all new conditions
- All dimension text and notes to be done in ROMANS.SHX text style with 1/10" height and pen no.1 in thickness
- Use alphabet for detail title and numerals for section title
- Mississippi River shall be on the upper portion of the drawings (drawing orientation)
- All work shall be done in Model Space then plotted in Paper Space
- Use drawings number (not drawings title) on the electronic files to identify the drawings.
- Use Port of New Orleans plotter config. file along with above requirements to achieve Port standards
- All Specification works to be done under Microsoft Word format
- Submit CD containing electronic files and hard copies (vellum) of final project drawings and specifications to the Port included PDF files format of both drawings and specifications
- All "as built" drawings shall be approved by the Engineer and also submitted in AutoCad Release 2009 or later version electronic drawing file format and a CD AutoCad disk(s) which contain all copies and a set of vellum drawing that is printed directly from the mentioned "as built" CD
- For additional information see the hard copies sample and attach disk

Please direct questions and requests for drawings to

Kevin Colburn
Technical Services Dept.
Port of New Orleans
Post Office Box 60046
New Orleans, LA 70160

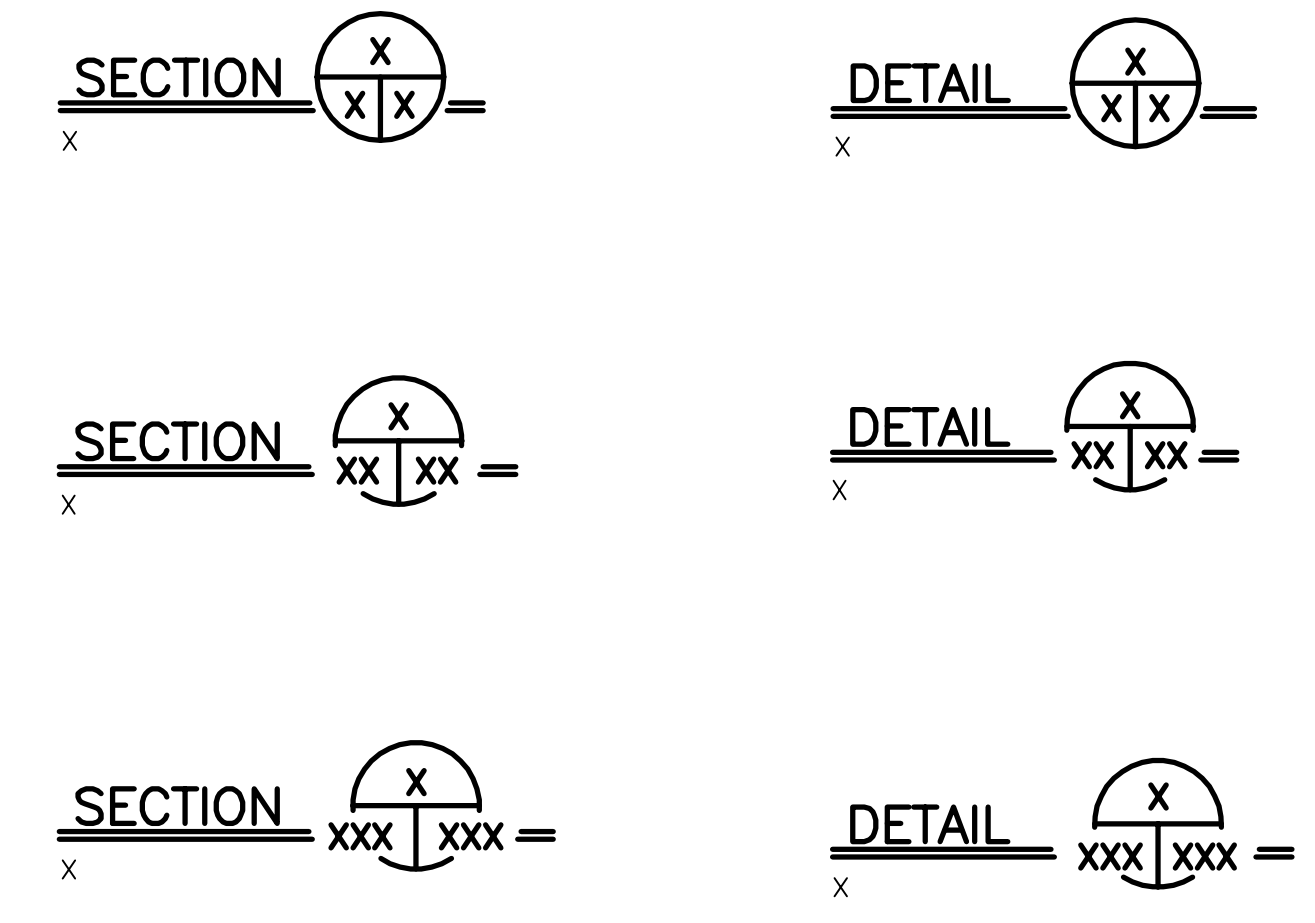
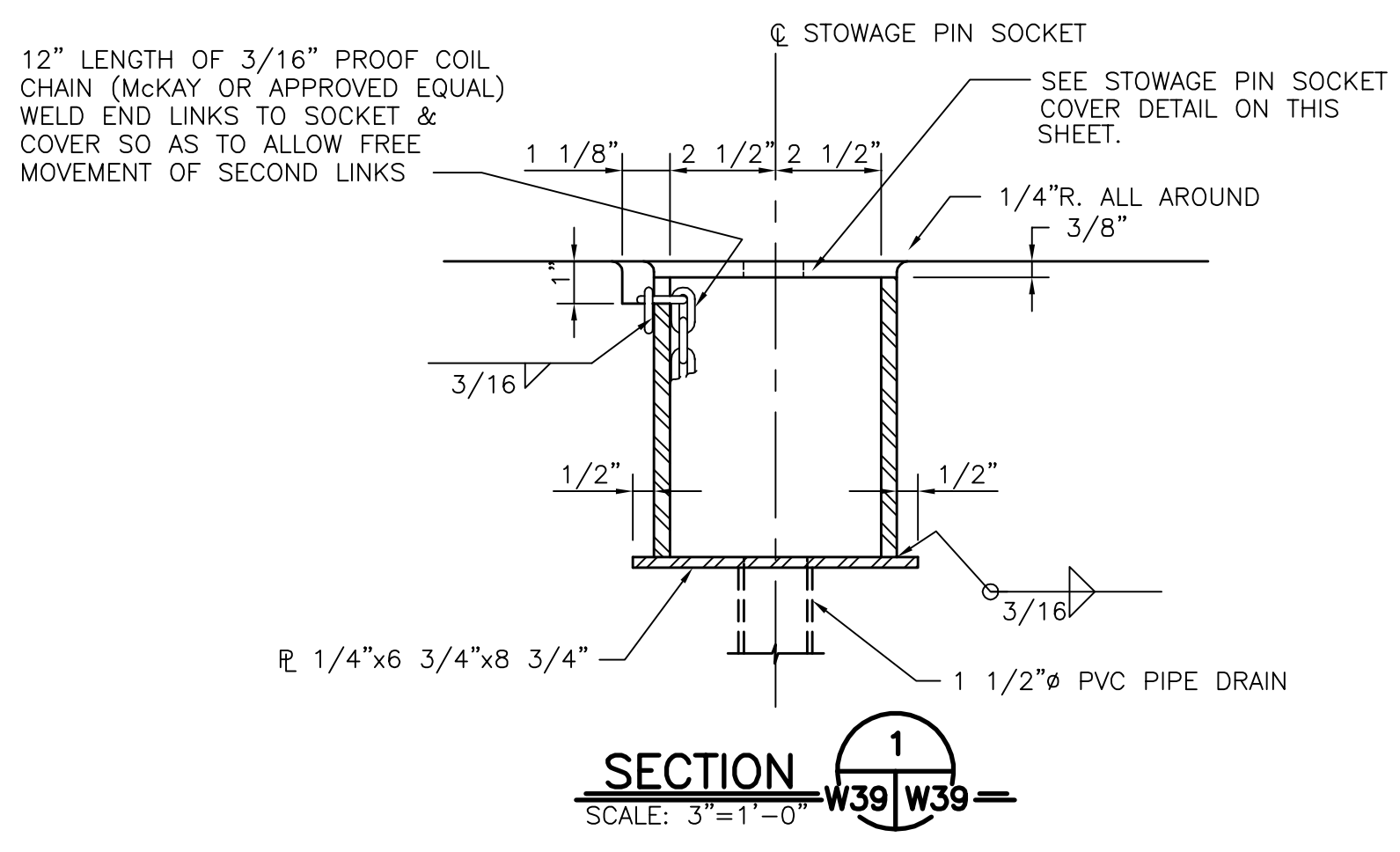
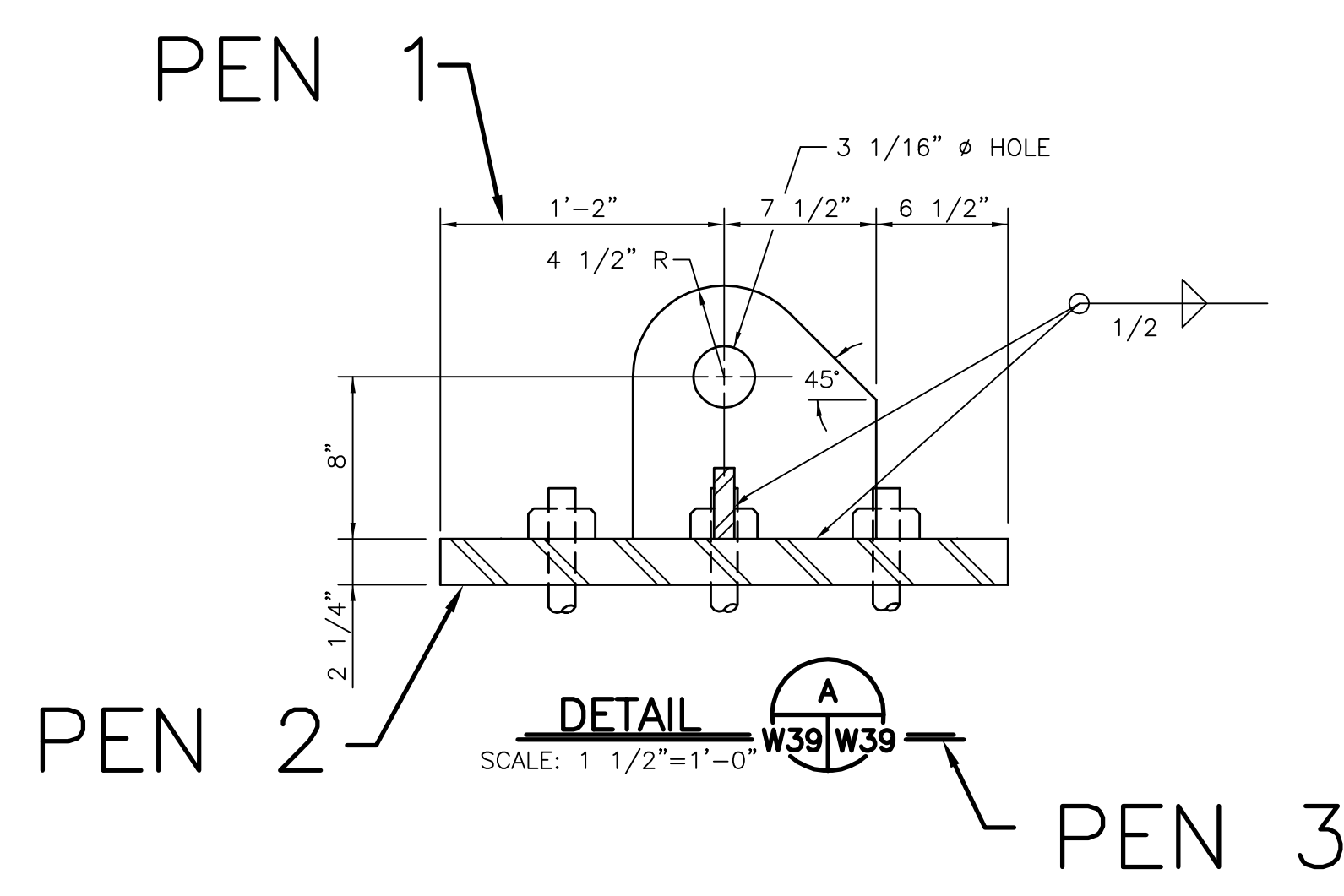
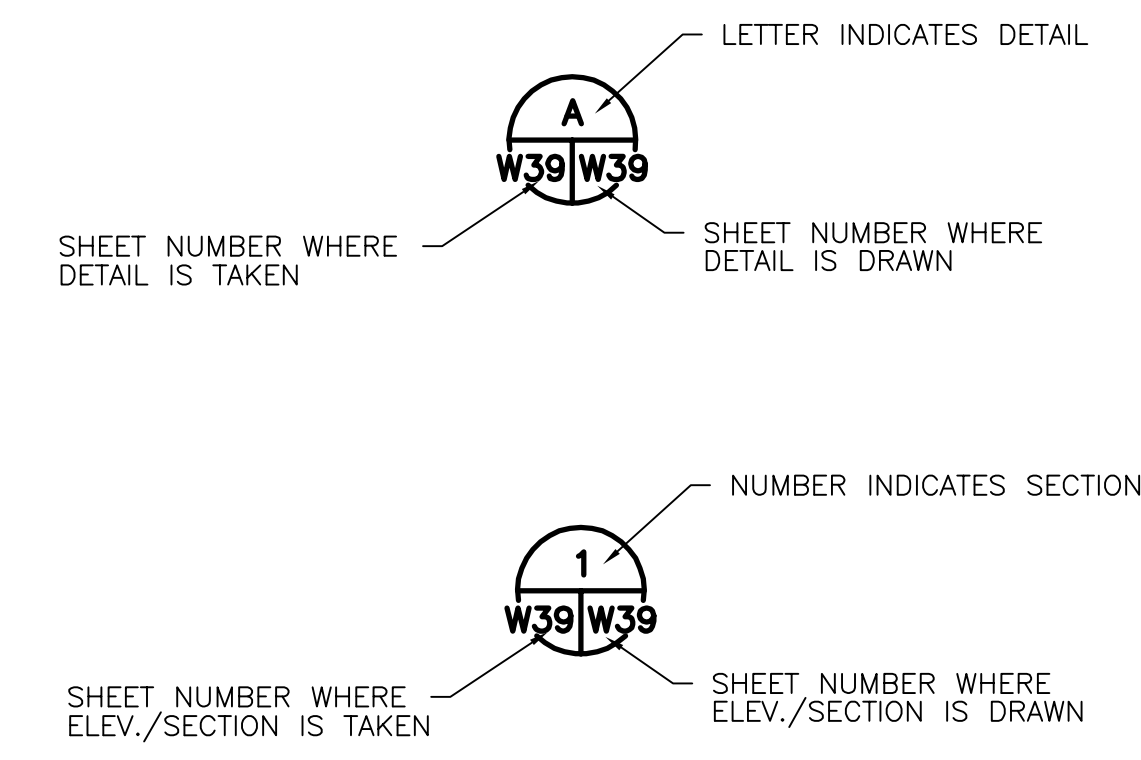
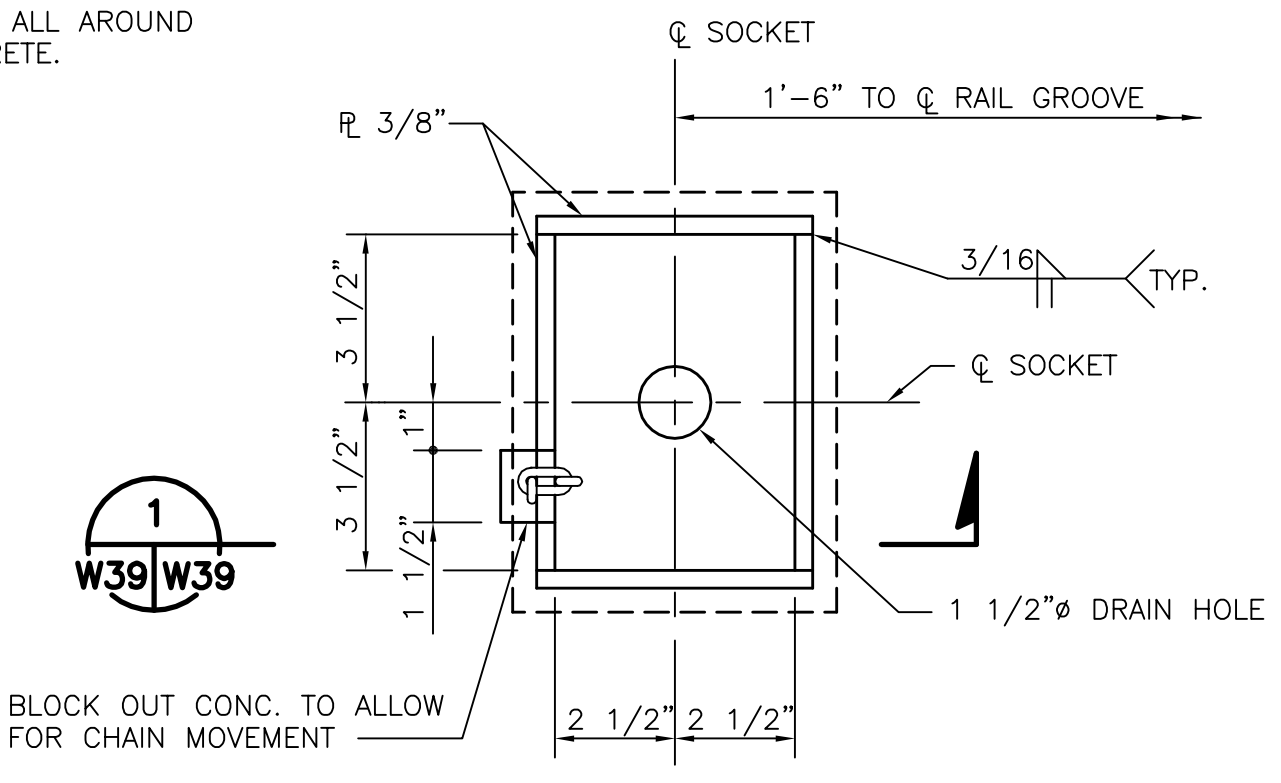
Tel. 504-528-3299
Fax. 504-528-3278
E-mail: colburnk@portno.com

DRAWING STANDARDS



NOTES

- PIN SOCKET, CHAIN, AND COVER TO BE HOT DIP GALVANIZED AFTER FABRICATION.
- TAPE COVER TO SOCKET ALL AROUND BEFORE POURING CONCRETE.



IMPORTANT

- COLORS 7, 8, 9, 10 BELONG TO PEN 1 (PEN WIDTH .009 IN./0.225 MM)
- COLORS 1, 2, 3, 11, 12 BELONG TO PEN 2 (PEN WIDTH .014 IN./0.35 MM)
- COLORS 4, 5, 6, 15 BELONG TO PEN 3 (PEN WIDTH .028 IN./0.70MM)
- ALL DIMENSION TEXT AND NOTES TO BE DONE IN PEN 1 WITH A 1/10" HEIGHT
- ALL TEXT TO BE DONE IN ROMANS.SHX
- USE PORT OF NEW ORLEANS PLOTTER CONFIG. FILE ALONG WITH ABOVE LISTED COLORS TO ACHIEVE PORT STANDARDS FOR LINE WIDTH. (PLOTTER CONFIG. FILE IS ON CONSULTANT DISK)

REV. 7	BY	DATE	REV. 6	BY	DATE	REV. 5	BY	DATE	REV. 4	BY	DATE	REV. 3	BY	DATE	REV. 2	BY	DATE	REV. 1	BY	DATE
--------	----	------	--------	----	------	--------	----	------	--------	----	------	--------	----	------	--------	----	------	--------	----	------

CONSULTING ENGINEERS		BOARD OF COMMISSIONERS PORT OF NEW ORLEANS	
DESIGNED _____		FACILITY NAME _____	
CHECKED _____		PROJECT TITLE _____	
APPROVED _____		SHEET DESCRIPTION _____	
IDENTIFICATION NO. _____		SCALE _____ DATE _____	
		(NAME) PORT PROJECT ENGINEER _____	
		DWG. NO. ISSUE BY BOARD REQ. XXXXX	